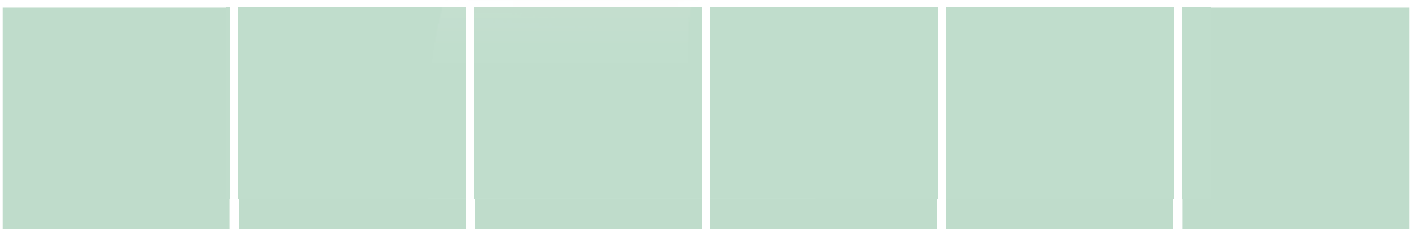
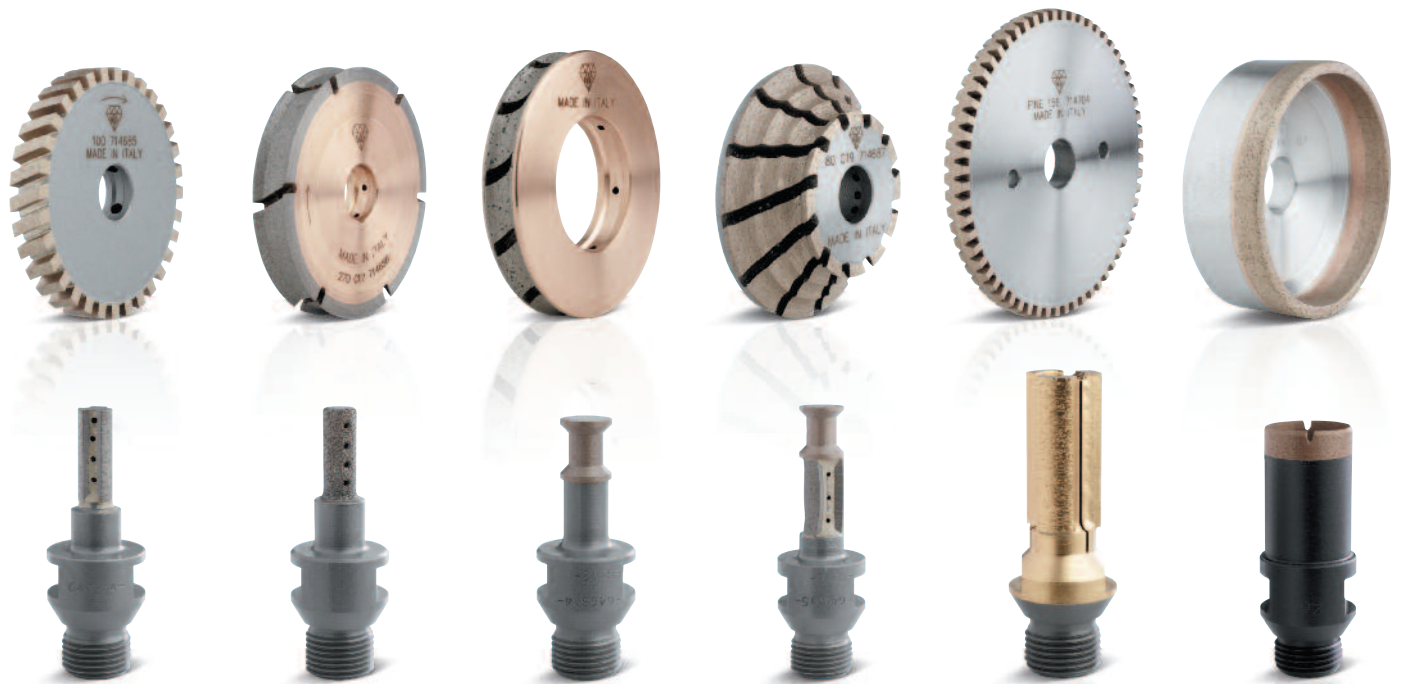
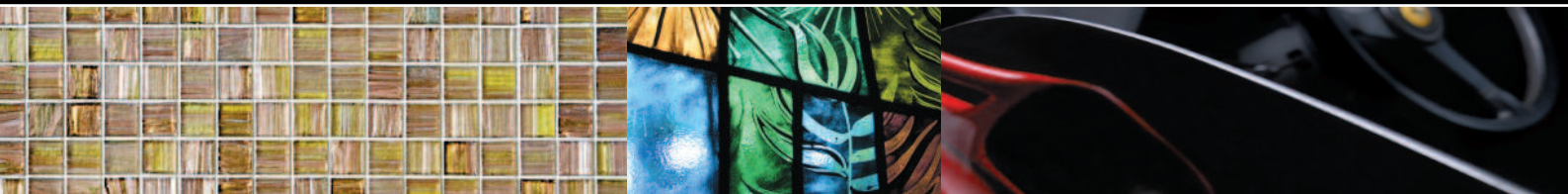
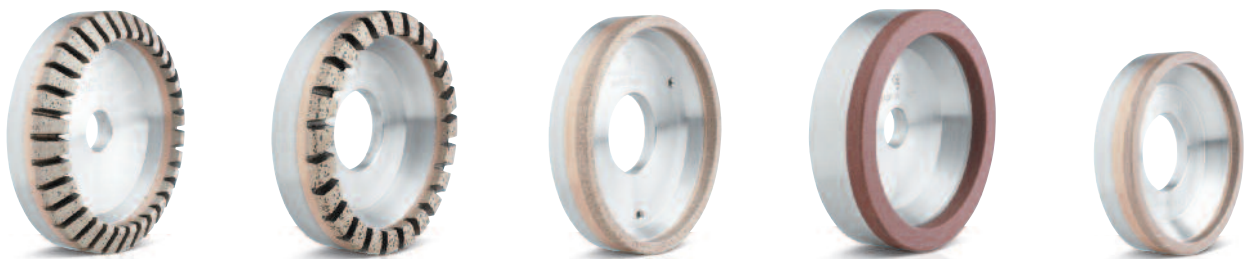


Glass Division





Tools for CNC Machines · Utensili per macchine CNC



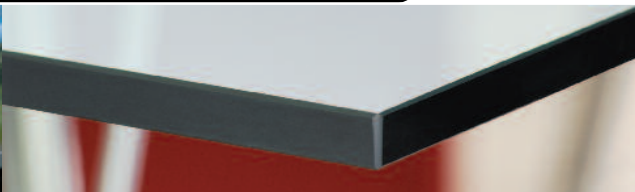
Wheels for Straight Edging and Double Edging Machines · Mole per macchine rettilinee e bilaterali



Wheels for Bevelling Machines · Mole per macchine bisellatrici

# Glass Division

DIAMOND TOOLS



UHS Wheels for the Automotive Industry  
Mole UHS per vetri auto



Wheels for Special Applications  
Mole per applicazioni speciali



Core Drills and Countersinks  
Foretti e svasatori



Cutting Discs · Dischi da taglio



Tools for Special Applications · Utensili speciali per cristalleria



ADI S.p.a.

36016 Thiene (VI) Italy  
Via dell'Economia, 12/16  
T +39 0445 360244  
F +39 0445 366862  
info@aditools.com

[www.aditools.com](http://www.aditools.com)